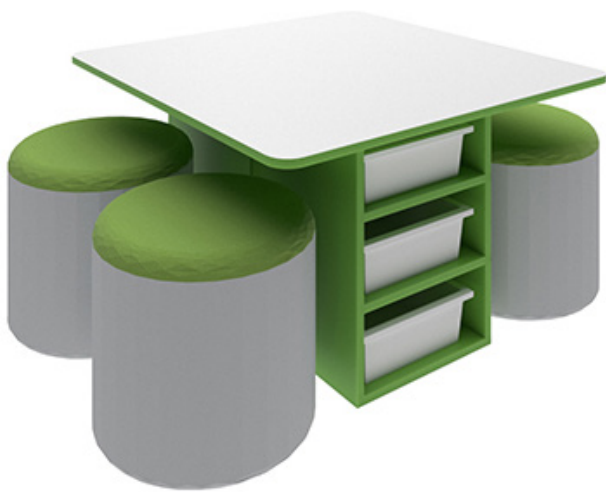


TOTE TABLE SUITE

CODE: RET256

PRODUCT DESCRIPTION

With unparalleled functionality at the forefront of its design, effortlessly pack away learning materials whilst maintaining quick and easy access. Featuring drum stool seating for 4 students, the Tote Table Suite is a contemporary addition to any learning space.



OPTIONS

Colours
Configurations and sizes

COMPOSITION

Castors
18mm Laminex E0 board
Tote trays (Available in blue, black & white only)



SPECIFICATIONS

W1200 D1000 H720

CORE COLOURS



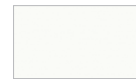
Curly Birch



Oyster Grey



Steel Blue



White

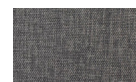


Greystone

Extended range available - see House Colour brochure.

STANDARD FABRIC SWATCHES

KEYLARGO



Ash



Wasabi



Sky



Marigold

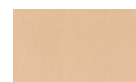


Paprika

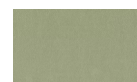


Denim

LUSTRELL CHARISMA (VINYL)



Ecru



Seafoam



Cloud



Orange



Poppy



Navy

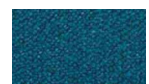
ASHCROFT ENCORE



Silver



Grass



Teal



Premium range available - see House Colour brochure.